

We don't sell perspectives, we build relationships

Our Portfolio: www.momographics.net
Contact us : sales@momographics.com.sg

Introduction

Momo Graphics is a boutique presentation firm that has the capabilities to create realistic visual renderings and animation flythrough. We believe in working closely with our clients to bring out the best of their project.

We are staffed with a strong team with considerable experiences ranging from architecture to interior to media graphics. Together, we provide the expertise needed for a good presentation package.

We are proud to be involved in a number of high profile projects: [Trump Towers Asia](#), [Danga Bay Masterplan](#), [Century City Masterplanning](#) and [HealthCity Singapore Masterplanning](#) to name a few.

Besides the usual renderings and architecture flythrough, Momo Graphics has completed 14 of the upcoming [Thomson Line stations](#) together with LTA and it's appointed consultants.

Momo Graphics has also been appointed by Singapore sports council, generating some vision images for the next generation of sporting activities.

In the beginning of 2015, Momo Graphics is proud and honoured to be part of the team behind The Bay, the tallest development in Cambodia, Phnom Penh.

We are also fortunate to have worked with various government agencies, non-profit organisation and even the largest cooperative group in Singapore, NTUC.



Clients

Momo Graphics worked with a wide range of clients, ranging from developers launching a new project to architecture firms gearing for competitions. We are also active in boutique interiors with customized furniture and lighting fixtures.

Overseas clients include Architecture firms in Los Angeles, Developers in China and Property stakeholders in Manila. We have a close working relationship with one of the leading developers in Philippines, Century properties.

Momo Graphics currently has 14 completed Thomson line stations animation fly through under our portfolio. We are experienced working with various government agencies with their visualization requirements too.

Capabilities

Momo Graphics currently has 2 project teams with average production capabilities of between 18-30 high quality renderings per month. We place great emphasis on quality and Momo Graphics do not undertake on new projects once we have reached our optimum production capacity.

This is to ensure dedicated support to the design team.

We have a dedicated animation team in charge of the various aspects during the production phase.

The office have presences in the exhibitions & information panel area but our core capabilities still lie in presentation renderings and animation.

A dedicated MRT team has been established in May 2013 to support the growing needs and demands from the developing rail lines in Singapore.

Momo Graphics is actively looking for interested team players who have a keen interest in the 3D presentation industry to join our growing family.

In the middle of 2017, Momo Graphics made plans to establish a foothold in Australia with a subsidiary office. We expect our Australian team to be up and running by end of 2017. We believe with our regional experience and portfolio, our rendering expertise would be a fresh addition to the architecture and design scene in Australia.

Trump Tower Asia

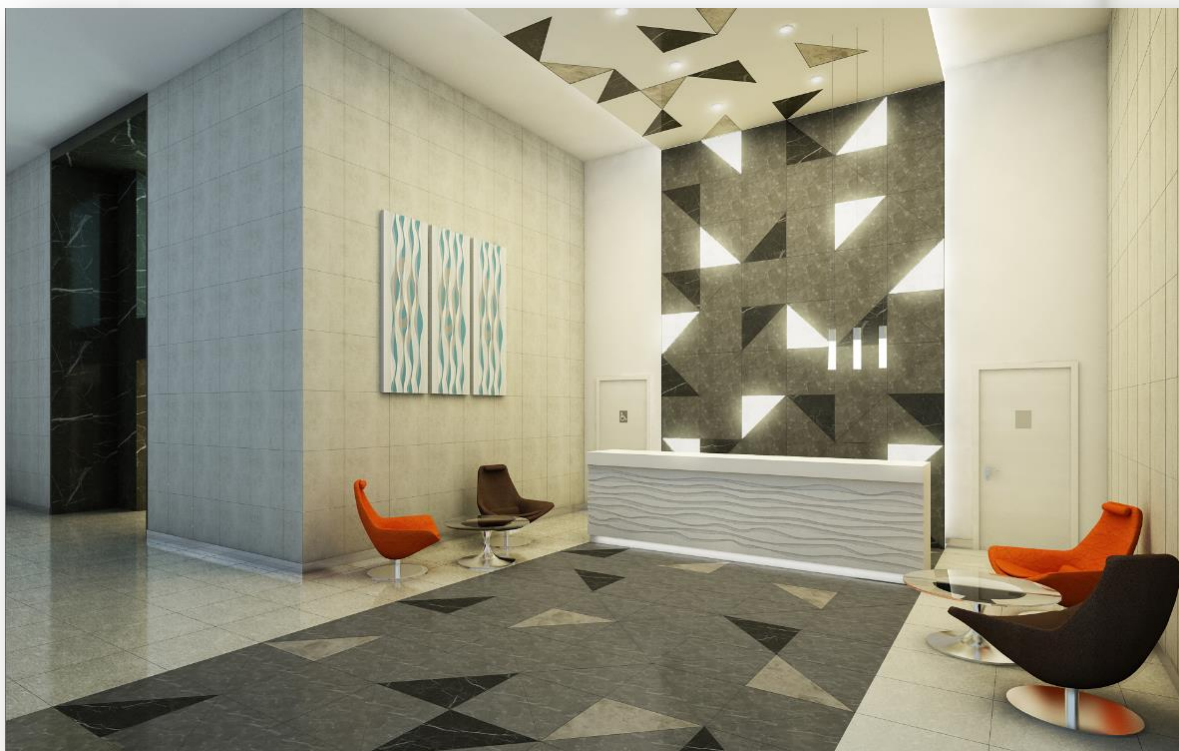
A picture paints a thousand words and a good render pays homage to the time and effort invested by the designers. Momo Graphics is honoured to be part of this prestigious project. The sleek exterior of trump towers exudes charm and class, every interior space within designed and planned down to the last detail. Momo Graphics has built our fair share of skyscrapers and rendered countless interiors. Trump Towers on the other hand, is our first sculpture.



Trump Interior







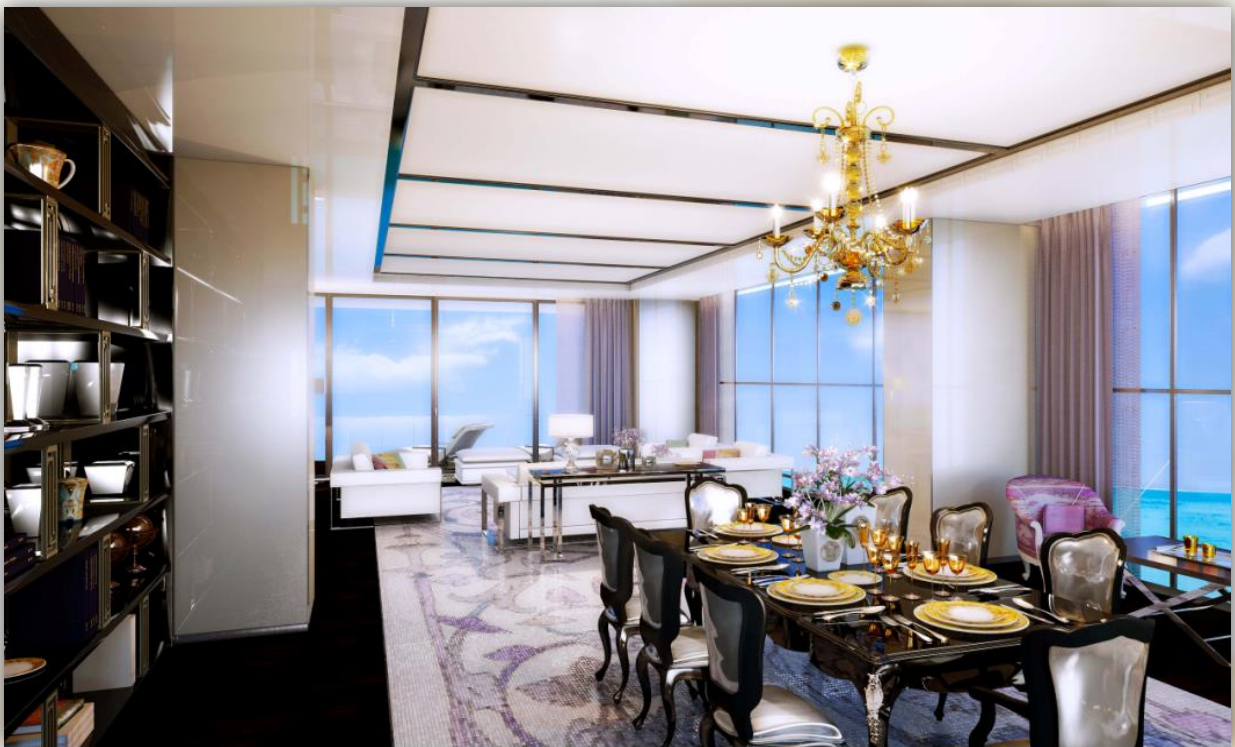
Versace Milano Project

The Milano Residences is the first residential project designed by Versace Home in Southeast Asia. MoMo Graphics worked closely with the architects and designers from Versace on this prestigious project. The building's unique architecture form complements Versace Home's elegant interior, Versace's timeless design is evident in the grand lobby, hallways, lounge, library, pool garden and spa.

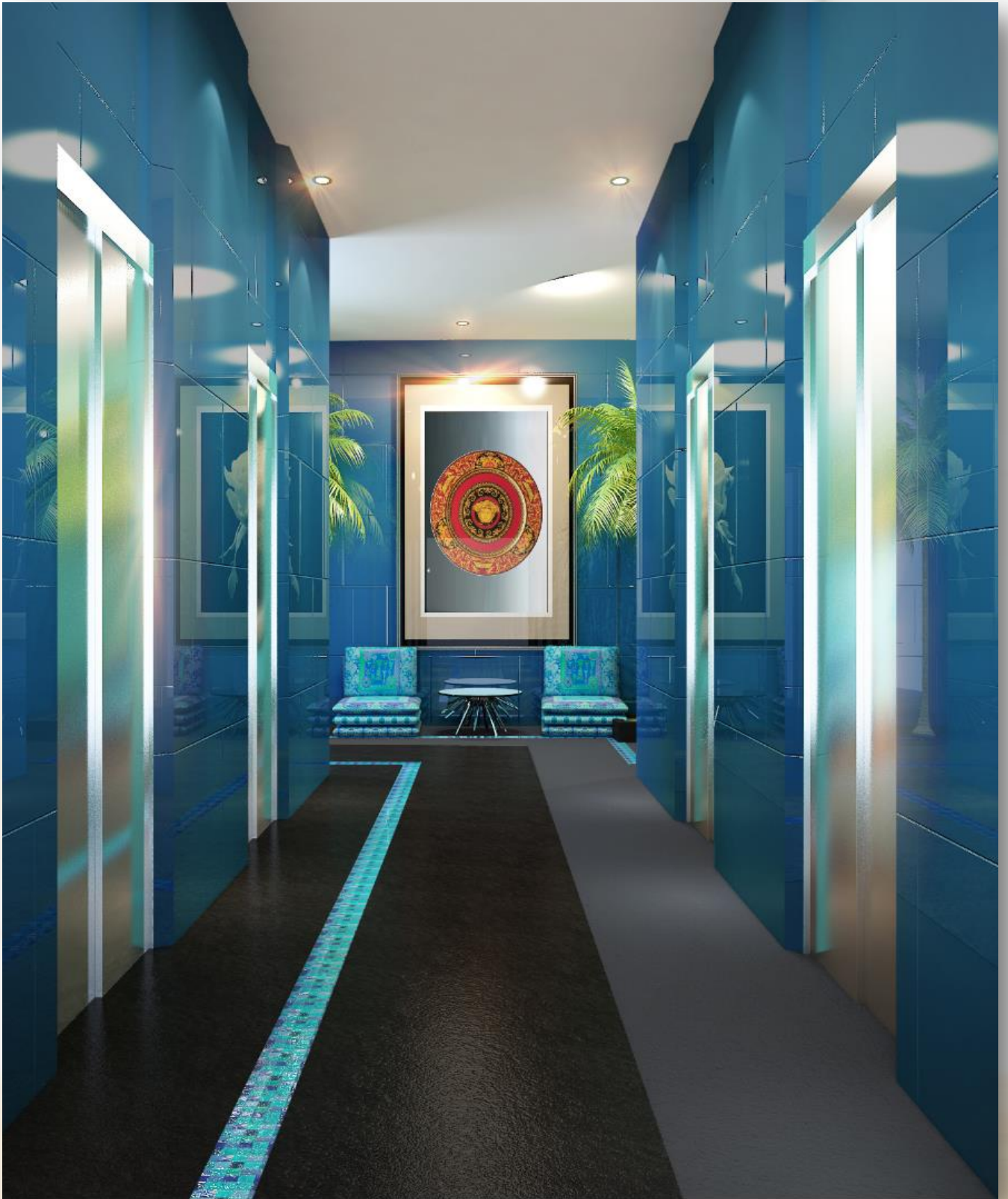


Versace Home Interior









The Bay Cambodia – Asia Pacific Award Winner 2015

Momo Graphics is proud and honoured to be part of the team behind The Bay, the tallest development in Cambodia, Phnom Penh.









Award Winning Development - KL Quarza Melawati Project







Singapore Sport Council 2030 vision

Singapore Sport Council wanted to showcase its sport vision of 2030 to the public. Momo Graphics Pte Ltd was appointed and worked tirelessly hand in hand with SCC to produce a set of images for their proposal. The perspective is created from ideas and it showcase how new sports concept can be introduced into the heartlands to engage the resident around. During the launch, the images were published in its website and newspaper across the Island. We were also told that MR. Lawrence Wong posted the images in his personal Facebook page.





Brazil World Cup Stadium

Momo is proud to be involved in the Bidding of a well-known World Cup Master planning Project in Brazil.

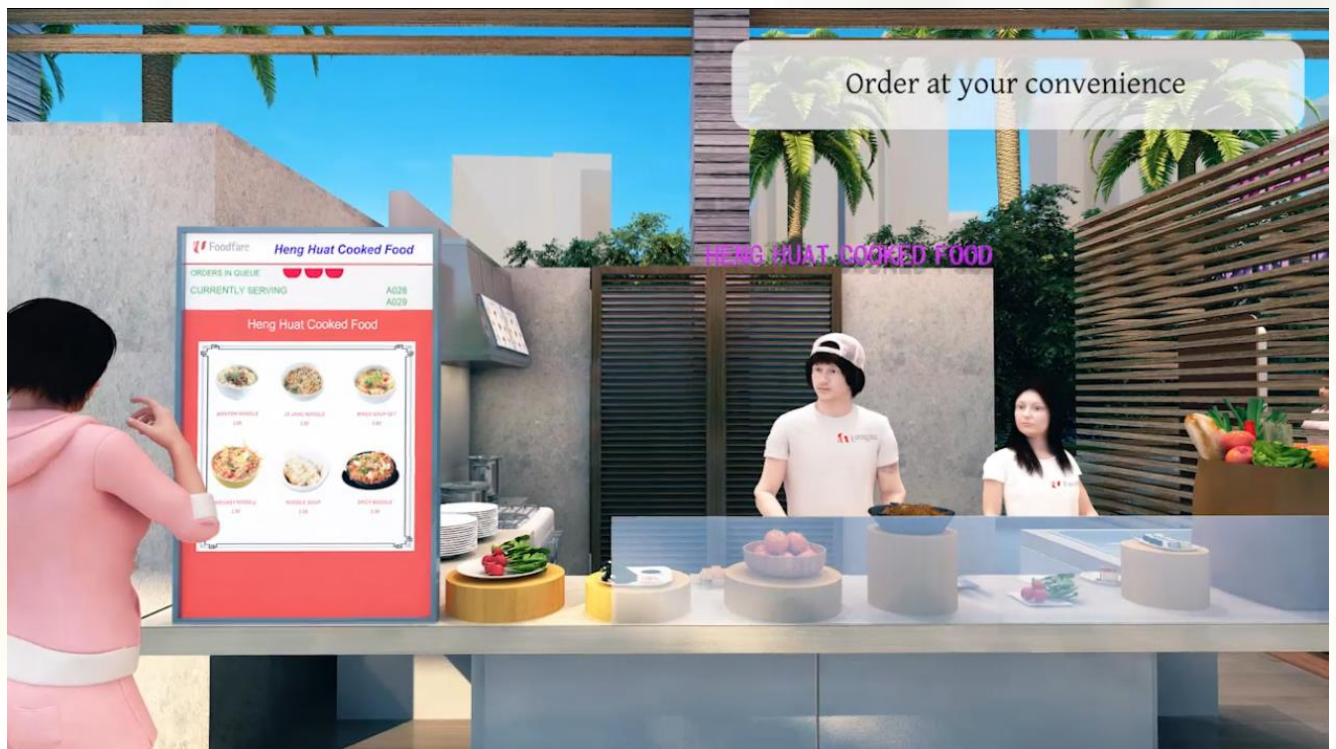


NTUC Foodfare – Future Ready Hawker Centre

Momo graphics was first approached by NTUC foodfare in early 2017 to develop a conceptual video. Before the government's official push to embark on a full epayment initiative for the country, Momo graphics worked with NTUC to present some ideas with regards to automation, epayment and ordering.

We had to come up with a storyboard within 2 weeks and after a couple of brain storming session, the team put forward some ideas that was adopted into the animation flythrough.

The end product is a self explanatory fly through 2 minutes long. It gives a glimpse of the experience foodfare is hoping their food centres of the future will be able to have. The short video presents not only the diners' perspective, but takes into consideration new initiatives that would help the next generation of Hawkers in their trade.



National Arts Gallery Singapore Renderings

It's a rare opportunity for us to be able to collaborate with the National art gallery for their series of marketing images. The thought of being able to build and render the former Supreme Court and city hall kept the team excited and we are proud to be playing a role in the transformation of 2 of Singapore's national monument.









MRT Thomson Line / KVMRT Renderings



Thomson Line

The team was really excited when we found out that we have the opportunity to work on the Thomson line stations. We are proud to have 12 completed stations under our portfolio. On top of the animation fly through, Momo Graphics has worked on numerous concepts, design schemes and competition with multiple architecture firms



KVMRT

Momo graphics is also actively engaged in rail works project in Malaysia. The team has worked closely with Mott Macdonald, a global engineering, management and development consultancy firm on a series of 3D visuals for the upcoming rail line in



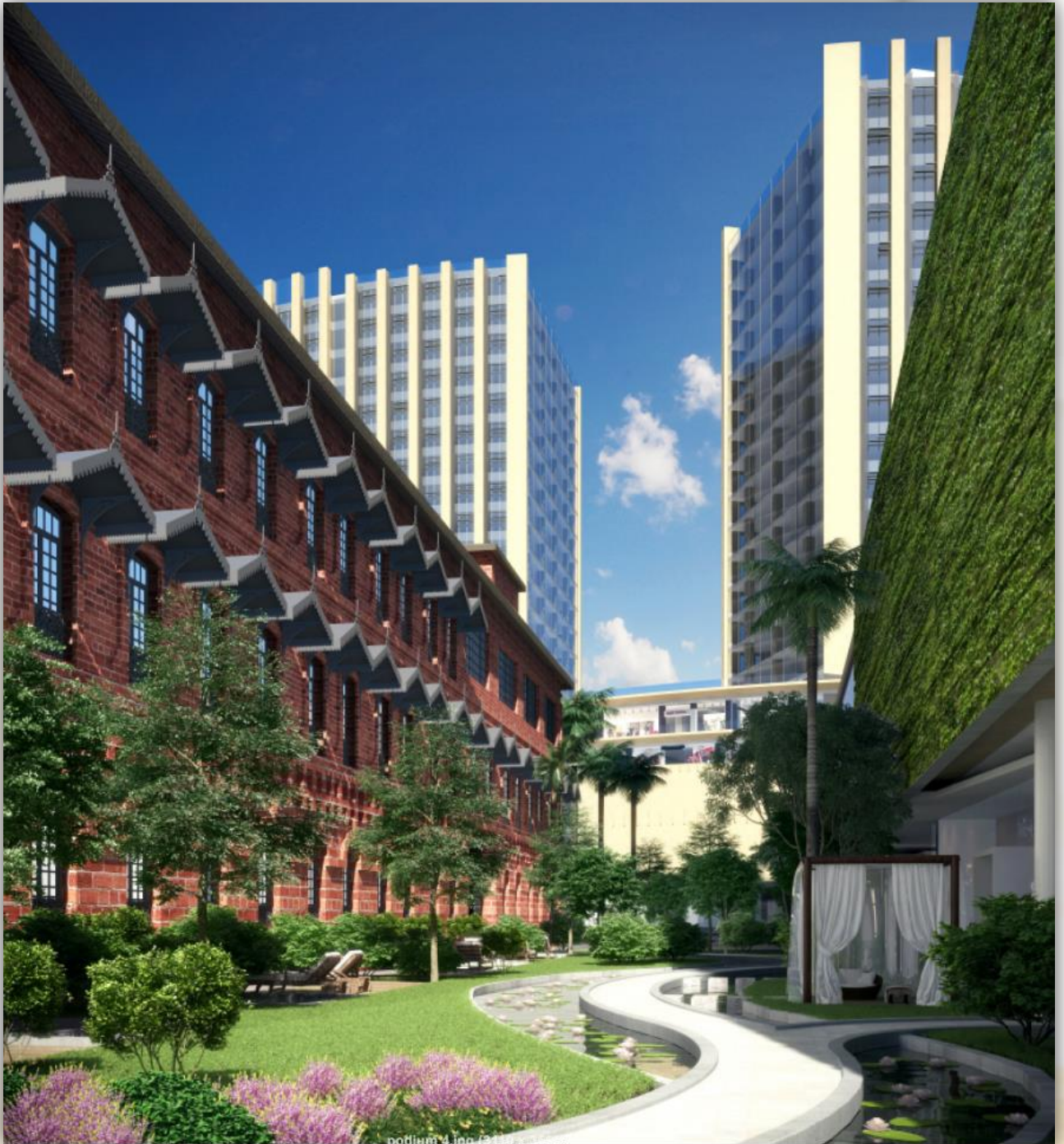


Bounty Development Project



South East Asia Development - Yangon





YANGON INTERIOR PROJECT





Heavy Industrial Projects

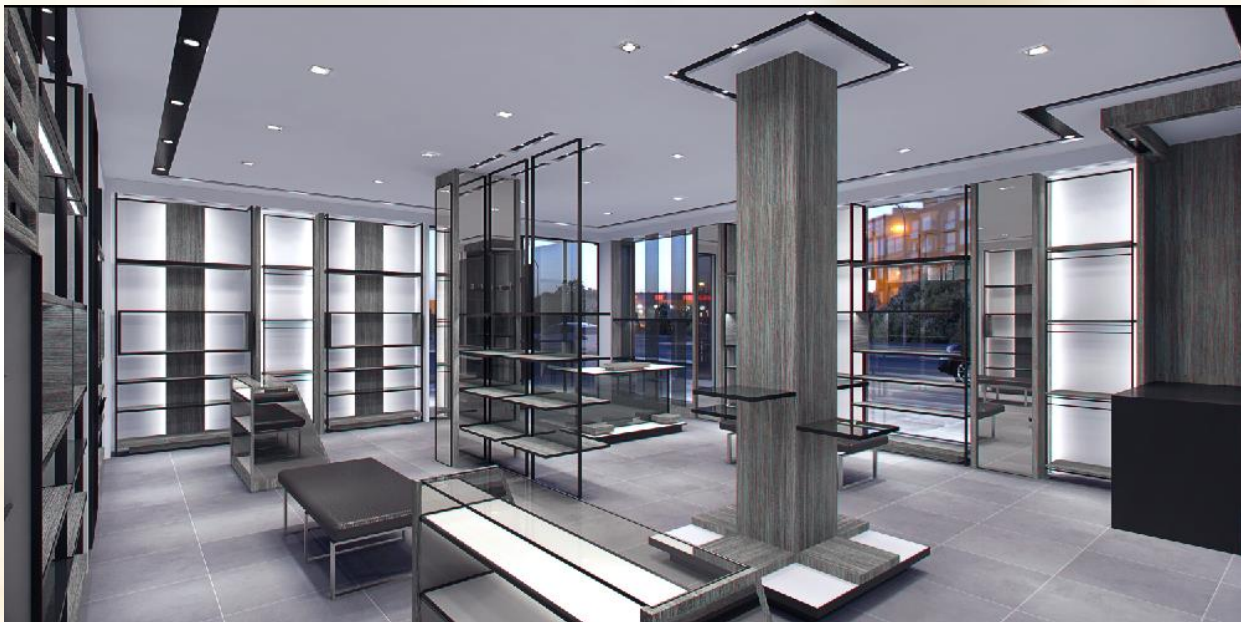


Masterplanning Projects





Boutique and Store front



Corporate Information

Momo Graphics Pte Ltd is registered and domiciled in the Republic of Singapore. Its registered office and principal place of operation is located at 1030A Upper Serangoon road Singapore 534767.

The Principle of activities of the company is to produce architecture graphics and animation. Company registration number: 201015873C.

Contact information.

Singapore

Momo Graphics Pte Ltd
www.momographics.net
General Enquiries
sales@momographics.com.sg

Regional sales manager : Kenny Khoo
kennykhoo@momographics.com.sg
Tel: 6673 2428